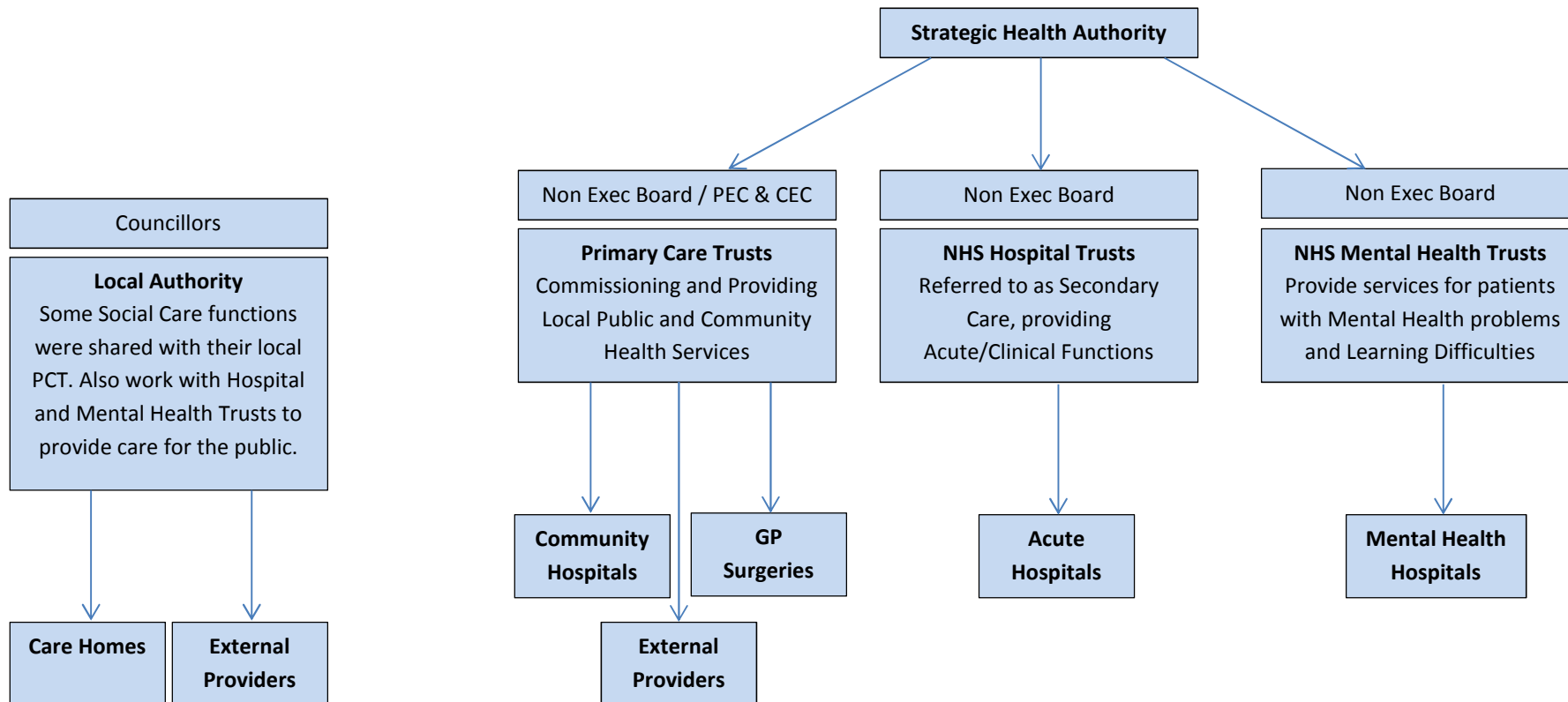
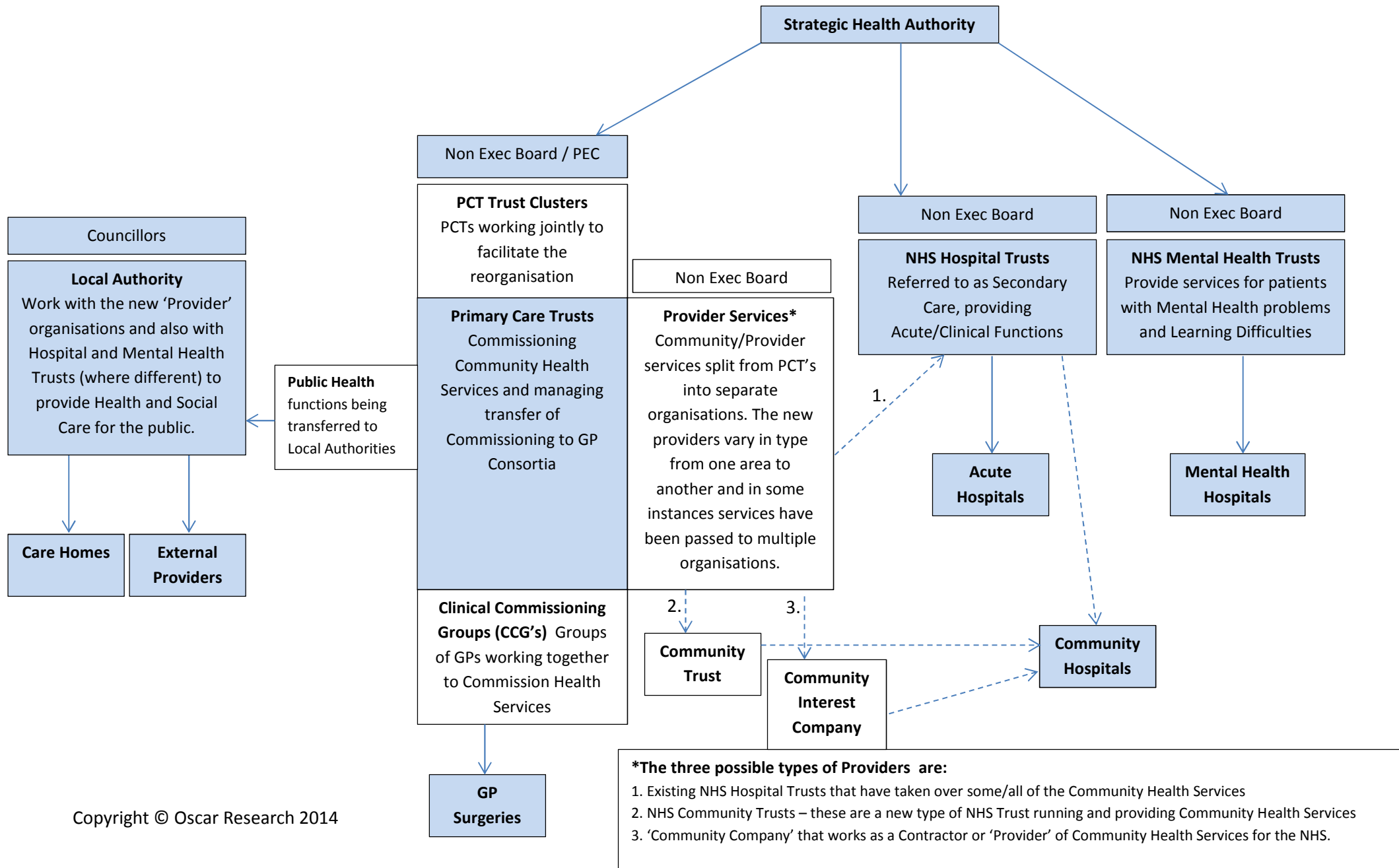


CHANGES TO THE NHS AND PROVISION OF STATE HEALTH SERVICES IN ENGLAND FROM 2010

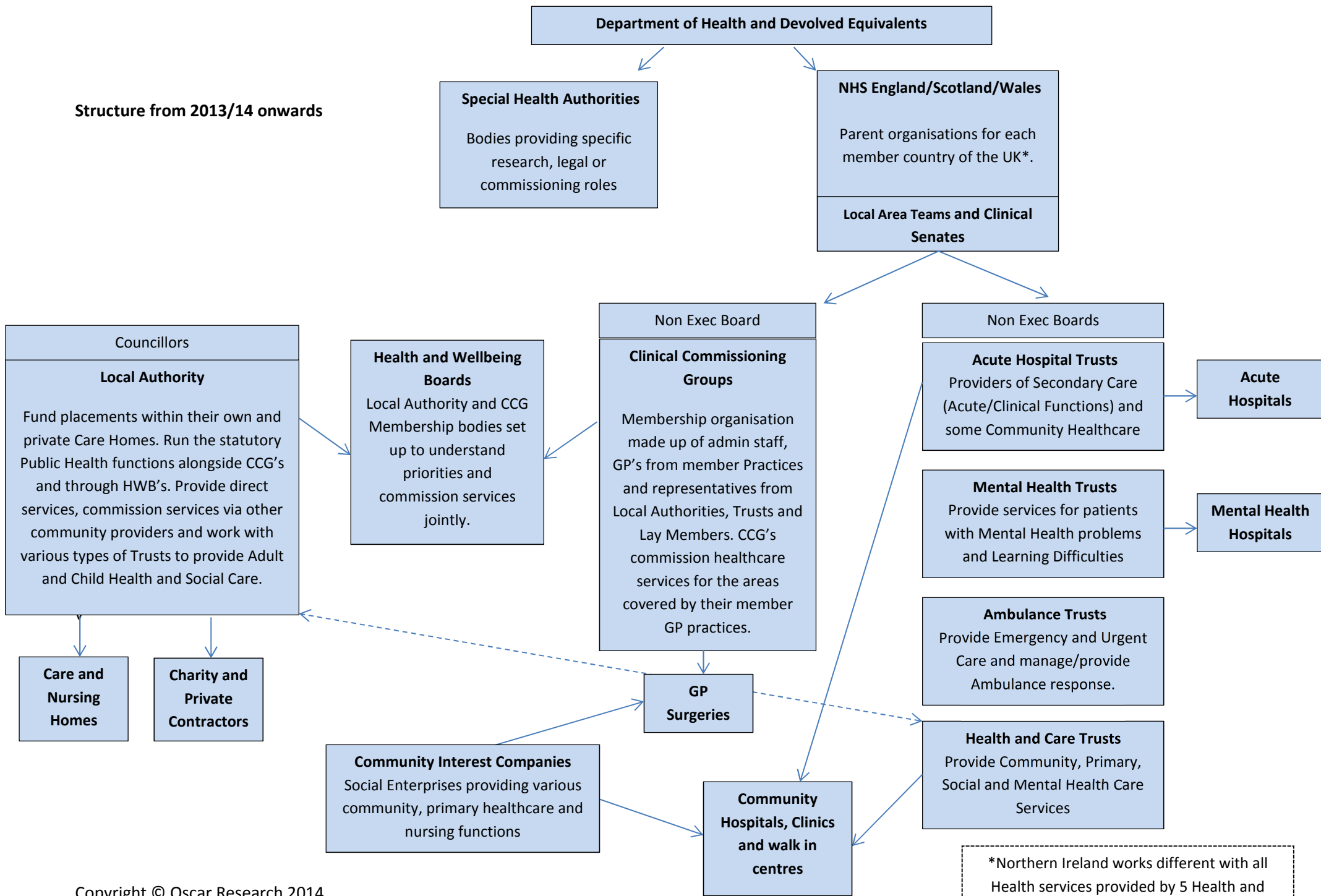
Structure up to Mid 2010



Structure and changes from 2011 to 2013



Structure from 2013/14 onwards



*Northern Ireland works different with all Health services provided by 5 Health and Social Care Trusts and 1 Ambulance Trust